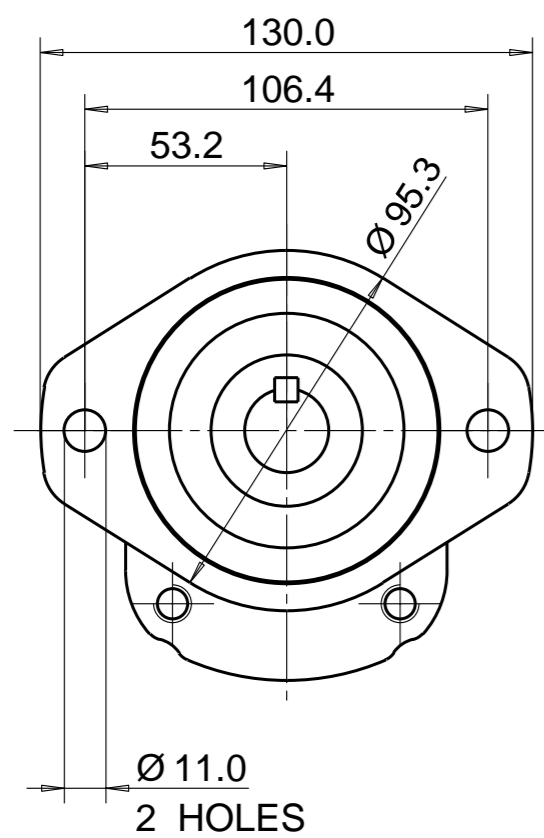
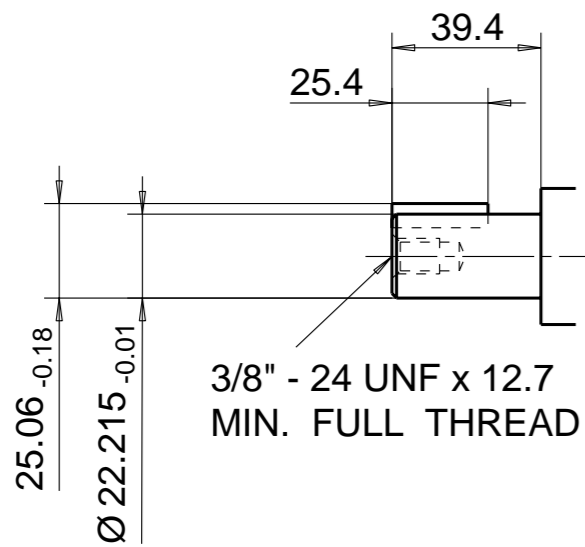


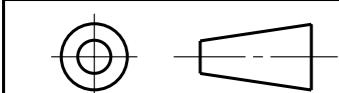
MOTOR DATA	
DISPLACEMENT	25,0 ccm
MAX. PRESSURE	190 bar
SPEED RATE	500 TO 2700 min <sup>-1</sup>
ROTATION	BI - DIRECTIONAL



ELBOW FLANGES NOT SHOWN ON THIS VIEW

25SEP08 WS 08-09-931  
13FEB08 WS 08-02-916

THIRD ANGLE PROJECTION



EXP NO.

FIRST USED

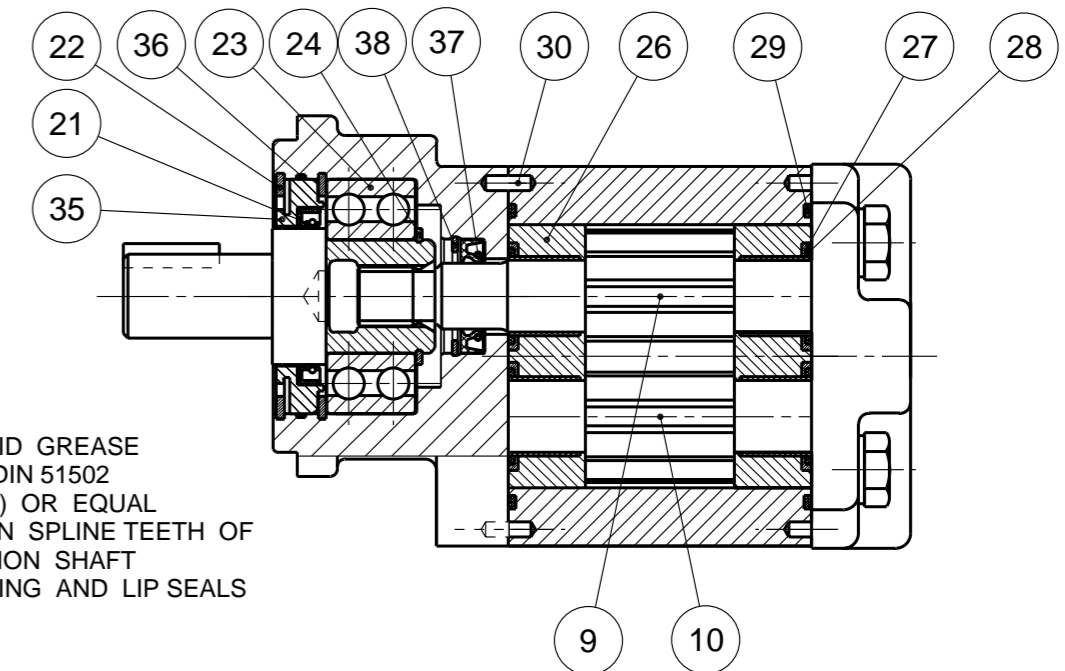
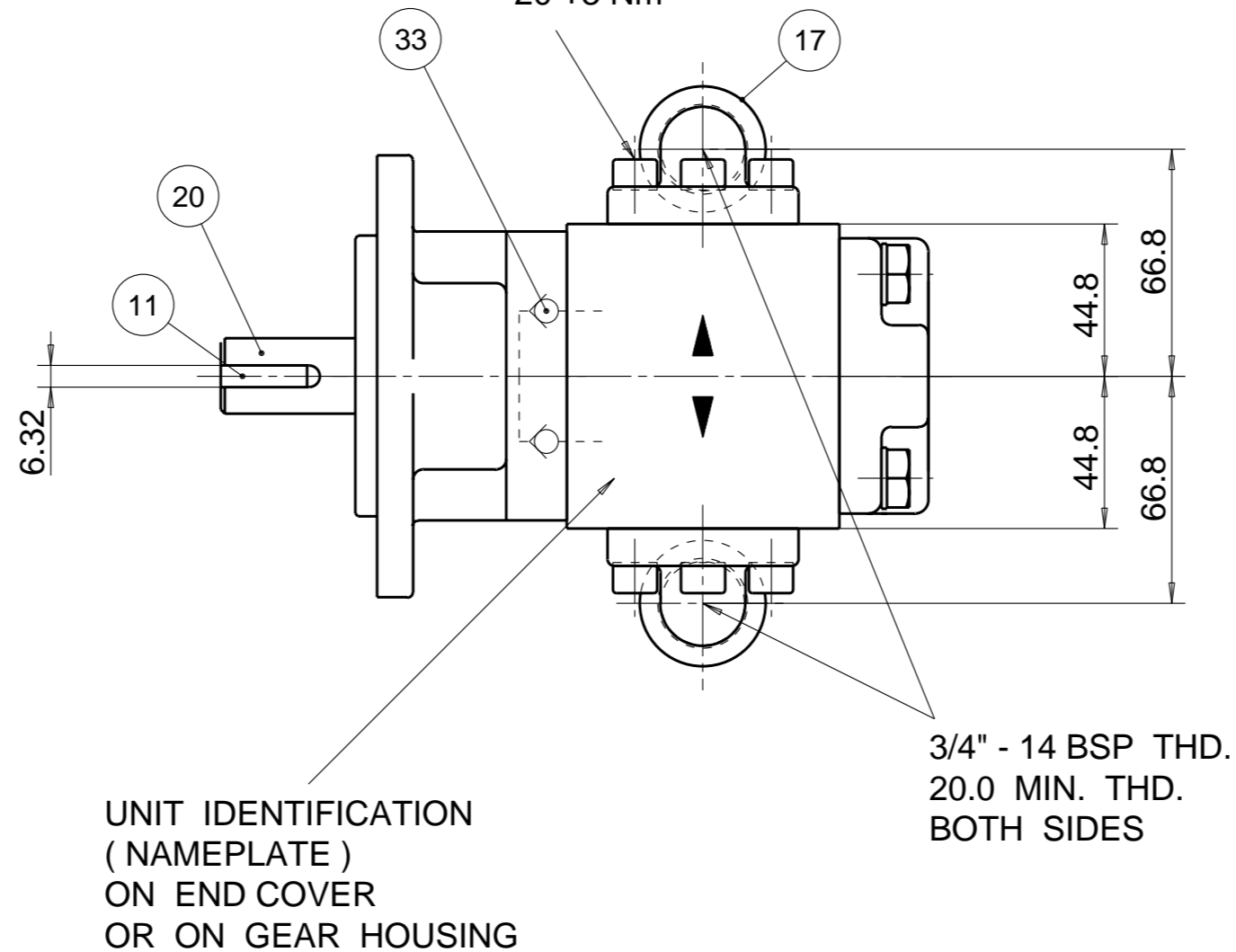
08 - 01 - 957

334 9210 069

C1 391 0381 127 WAS 9511-305-00F

SYM. REVISIONS 06NOV08 WS 08-11-907

INSTALLATION TORQUE FOR M8 SCREWS 20 +3 Nm



FILL LIQUID GREASE GOH - 20 DIN 51502 (SGA 600) OR EQUAL - BETWEEN SPLINE TEETH OF EXTENSION SHAFT - IN BEARING AND LIP SEALS

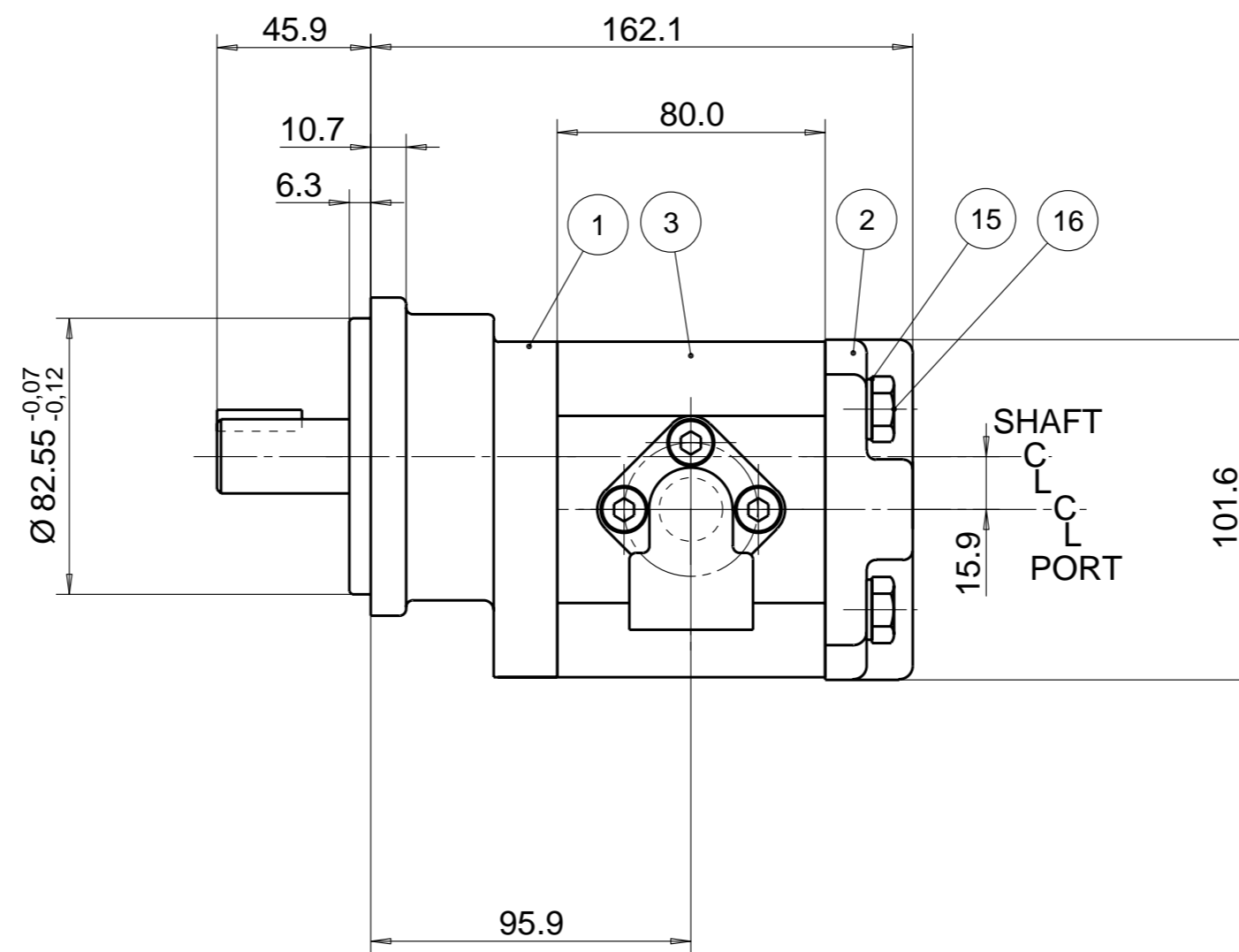
NOTE

1 FOR ASSEMBLY INSTRUCTIONS SEE DWG. NO. "511-B2" "PGM511 MOTOR ASSEMBLY INSTRUCTIONS".

37	8339-019-00S	1	SEAL, RING	38	9211-323-00B	1	RING,SNAP
28	8301-016-0B9	4	SEAL. CHAN.	36	9329-025-006	1	O-RING
27	8301-016-0AB	4	SEAL. CHAN.	35	5240D-011-000	1	SEAL, CARR
26	8301-015-006	2	SEAL. BK-UP	34			
25	391 2185 133	2	THRBLK/BSHG	33	8301-061-00S	2	CHECK VALVE
24	9212-328-00D	1	RING, SNAP	32			
23	391 0381 127	1	BRG, BALL	31			
22	9211-355-00H	2	RING, SNAP	30	391 2080 078	2	PIN. DOWEL
21	9411-415-00D	1	SEAL, LIP	29	9313-145-00B	2	SEAL. SECT.
ITEM		REQD		ITEM	PART NO	REQD	

OB --- BOM. COMPONENT

20	5240D-005-00F	1	SHAFT, CONT
19			
18			
17	8654-011-00M	2	ELBOW CONNECTOR KIT
16	391 1401 547	4	SCREW (110 MM)
15	391 3782 231	4	WASHER
14			
13			
12			
11	8794-010-00D	1	KEY
10	334 2725 000	1	DRIVEN GEAR
9	334 1125 003	1	DRIVE GEAR
8			
7			
6			
5			
4			
3	73340:4120065	1	HOUSING. GEAR
2	1PXC01B1B1B1B1V	1	HOUSING. PEC
1	334 5021 245	1	HOUSING. SEC
ITEM	PART NO	REQ'D	DESCRIPTION



THIS DOCUMENT CONTAINS INFORMATION THAT IS CONFIDENTIAL AND PROPRIETARY TO PARKER-HANNIFIN CORPORATION ("PARKER"). THIS DOCUMENT IS FURNISHED ON THE UNDERSTANDING THAT THE DOCUMENT AND THE INFORMATION IT CONTAINS WILL NOT BE COPIED OR DISCLOSED TO OTHERS OR USED FOR ANY PURPOSE OTHER THAN CONDUCTING BUSINESS WITH PARKER, AND WILL BE RETURNED AND ALL FURTHER USE DISCONTINUED UPON REQUEST BY PARKER. ALL RIGHTS RESERVED.

PGM511B0250BM\*L4\*NE5\*E5\*B1B1B1

MATERIAL

ADM CTR M  
REV DTE 06NOV08

H.E.-STD:

WT 5.3 kg

DIMENSIONS ARE MM

Parker Pump & Motor Division Chemnitz

DR.BY DATE CH.BY DATE SCALE  
WS 28JAN08 JS 28JAN08 1/2

334 9210 069

© 2008 Parker Hannifin Corporation

REPLACEMENT FOR 5240D